



THE I-84 HARTFORD PROJECT

Bicycle/Pedestrian/Transit Working Group Meeting # 1

October 1, 2014



THE I-84 HARTFORD PROJECT



Welcome!



U.S. Department of Transportation
Federal Highway Administration



CRCOG *CAPITOL REGION COUNCIL OF GOVERNMENTS*
Working together for a better region.



Agenda

1. Project Briefing

- Introduction to project and where we are today
- Review of key findings from Needs and Deficiencies report
- Review of bike counts recently conducted

2. Conceptual Planning Work Session

- Mark up a study area map with key bike/ped connections, discuss priority treatments
- Mark up priority transit routes and stops and explore enhancement options
- Identify potential intermodal connections and opportunities
- Identify issues and constraints.

3. Discuss next steps, future meetings



Where is the Project?

Approximately from Flatbush Avenue to I-91





I-84 Hartford Project Mission

With **active engagement** of the public, **evaluate** all reasonable options for the replacement of I-84 through Hartford and to **build** the resulting project.



First, a little history...

- Rail line built in 1830s
- I-84 built in 1960s
 - Designed to avoid impacting rail
 - Resulting design is mostly elevated



A product of its time...

- I-84 was conceived prior to NEPA / Federal regulations
- Soon after it was built, many realized that its effect on Hartford was not all positive



“The impact of the I-84 freeway upon the physical environments into which it was introduced has been both dramatic and overwhelming.” - 1970 CTDOT & FHWA

- The I-84 Hartford Project provides an opportunity to rethink the previous design

What's the need?

- Bridge Structure Deficiencies
- Traffic Operational and Safety Deficiencies
- Mobility Deficiencies



Community challenges

- Connectivity between places
- Aesthetics and viewsheds
- Social and economic impact
- Historic preservation



Image at left and top left courtesy of Heather Brandon



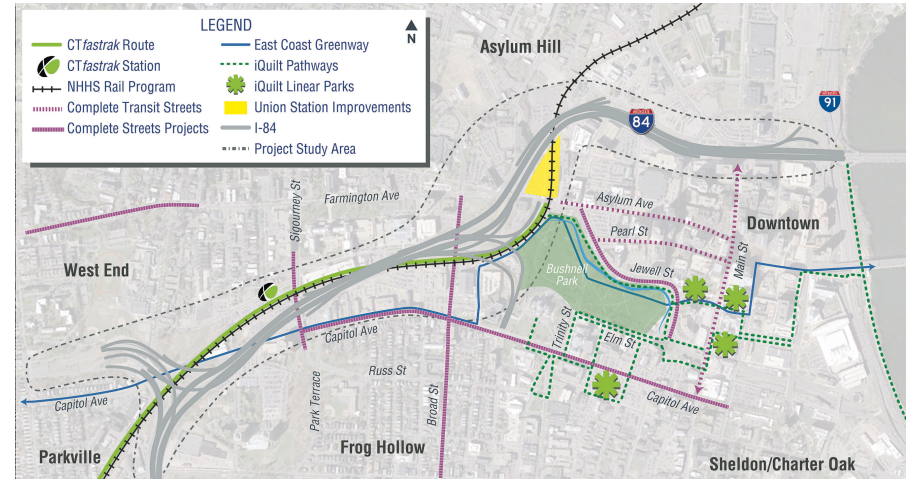
Image courtesy of Barbara Steele

Image courtesy of Archives and Special Collections, UConn Library



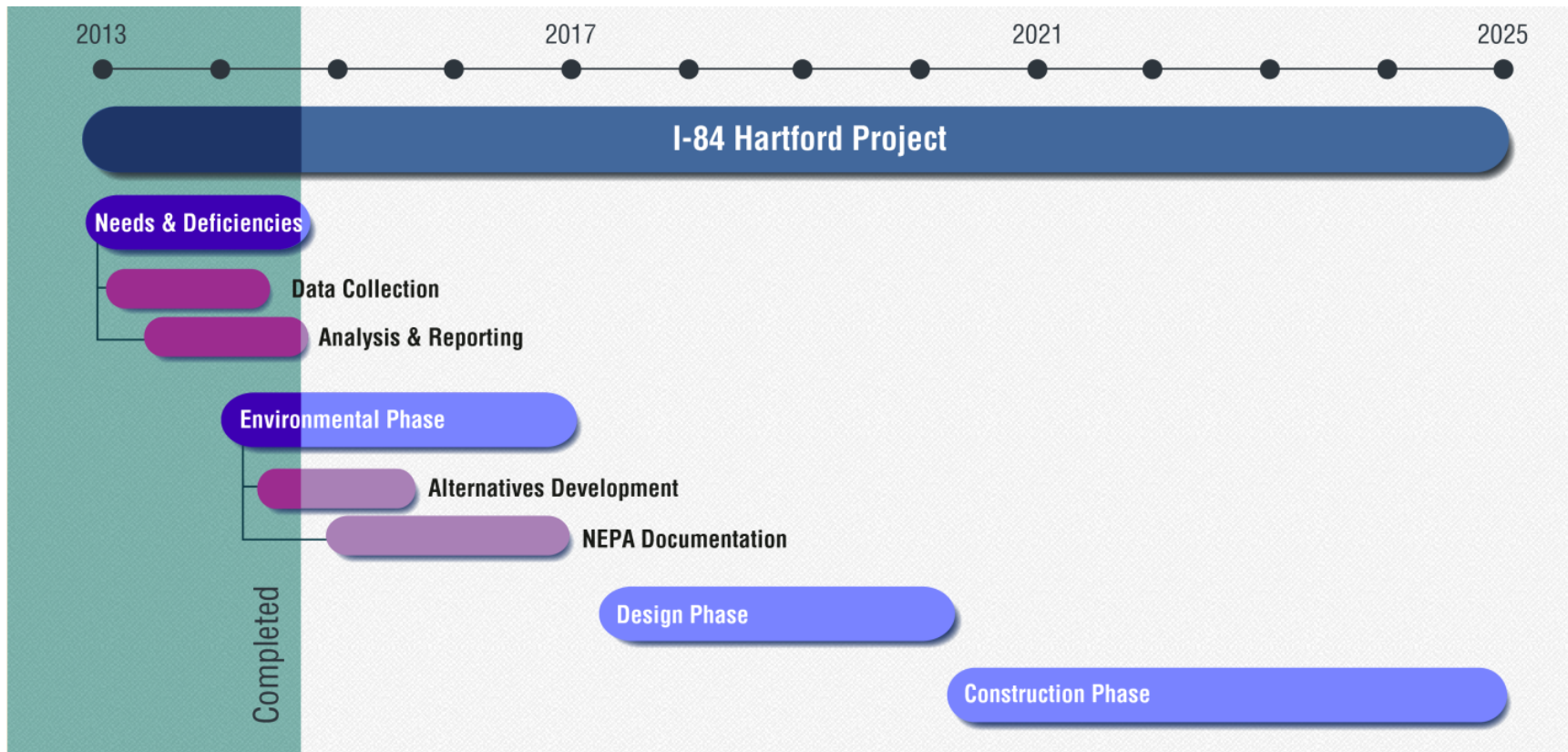
...And many complexities

- Rail line interwoven with I-84
- *CTfastrak*
- New Haven-Hartford-Springfield rail program
- Densely developed urban landscape (very constrained corridor)
- How to build it and how to pay for it?



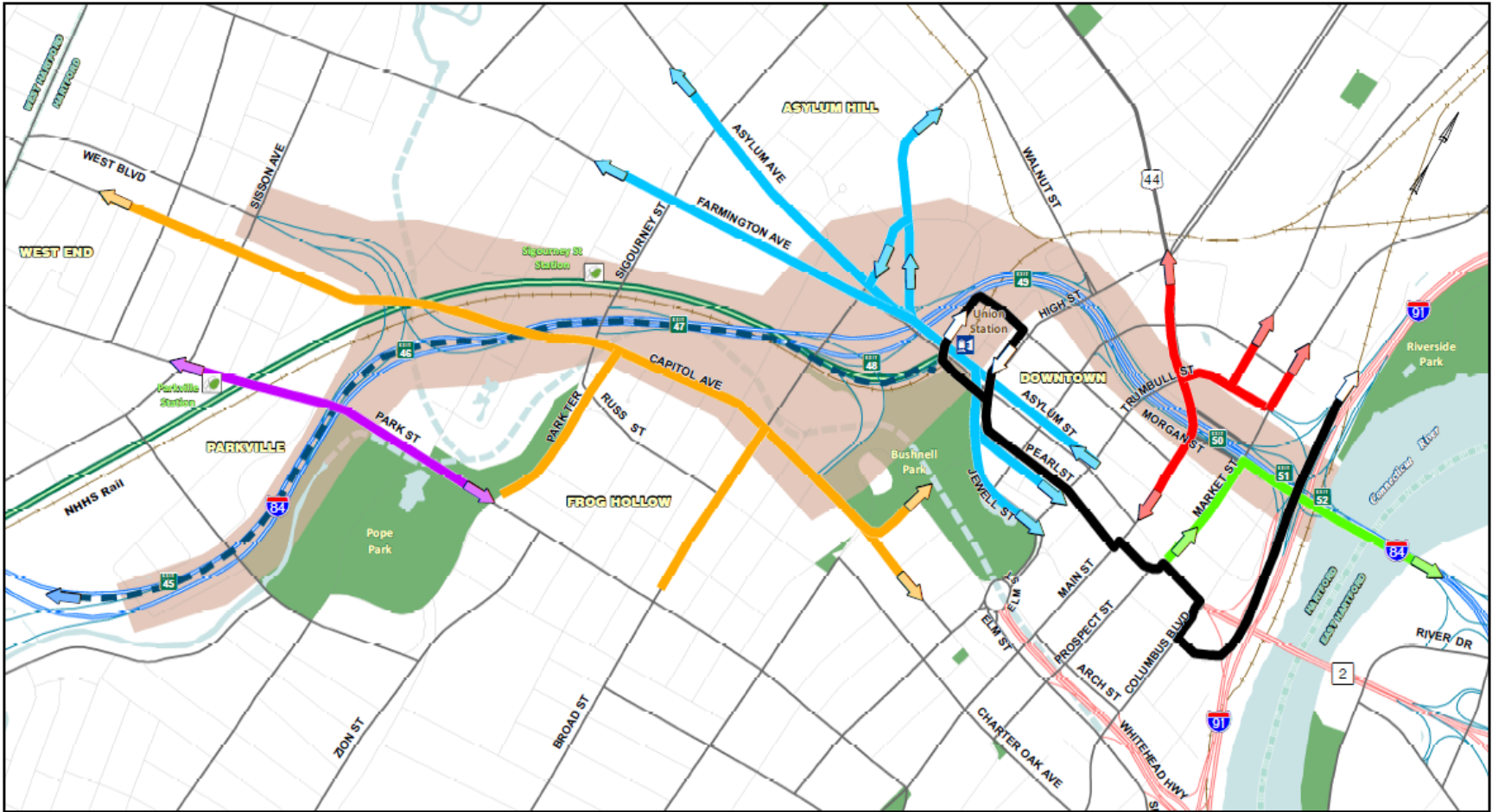


Where we are today





Local Bus Service

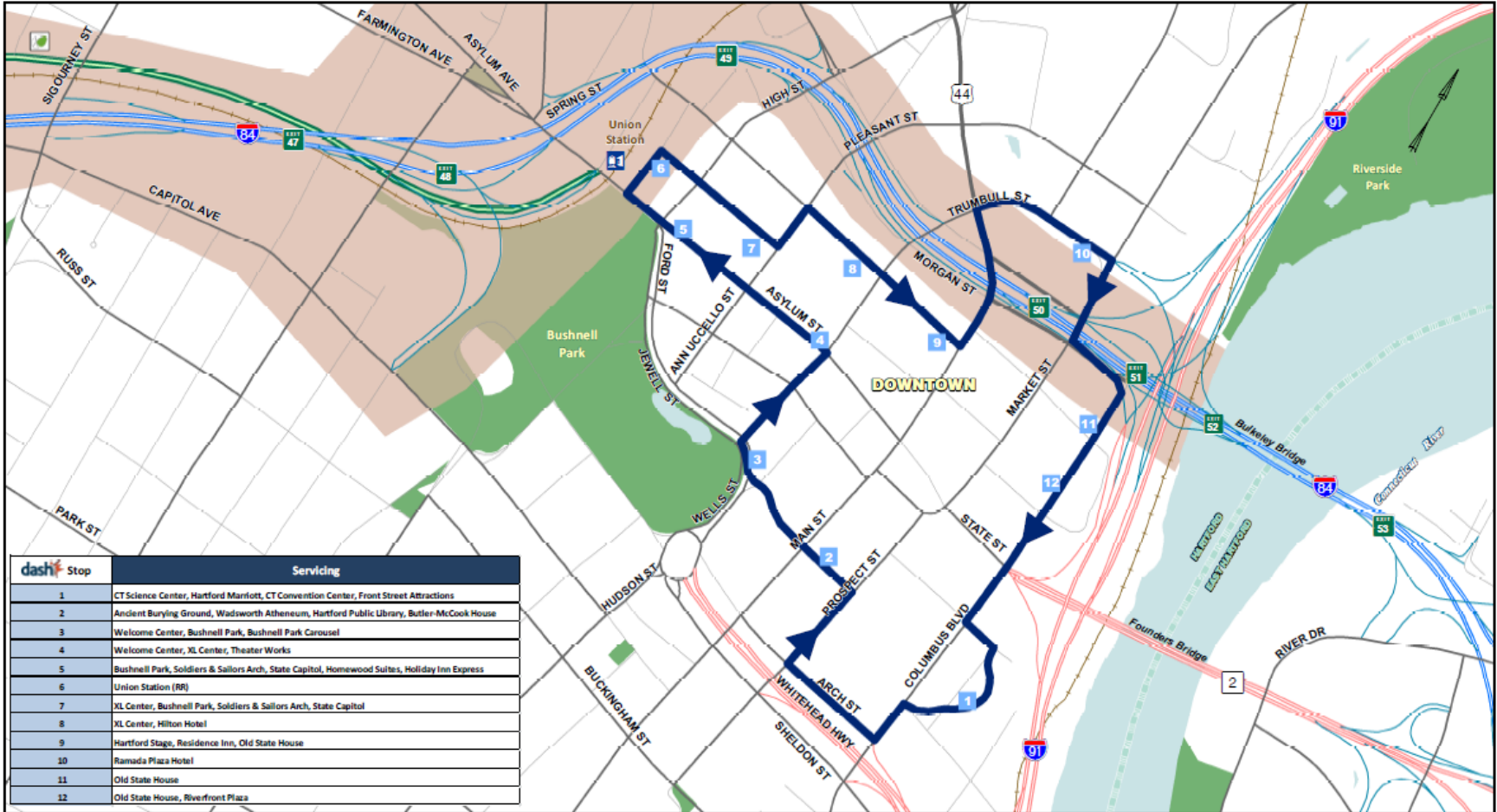


LEGEND <ul style="list-style-type: none"> Asylum Street/Avenue (Routes 35, 60, 62, 64, 66, 72, 74, and 76) Bradley Flyer (Route 30) Capitol Avenue (Routes 61, 63 and 69) East of the River (Routes 80, 82, 83, 84, 85, 86, 87, 88, 94, 95 and 96) Main Street North (Routes 32, 34, 36, 38, 40, 42, 44, 46, 50, 52, 54, 56, and 58) Park Street (Routes 31 and 33) Route 35 (weekends only) Project Study Corridor Town/City Limit Park River Conduit 		<ul style="list-style-type: none"> I-84 I-84 Ramp Other Highway U.S. Highway/State Road Major Road 		<ul style="list-style-type: none"> CTfastrak CTfastrak Station I-84 Exit # Union Station Park Water 		
The I-84 Hartford Project						
Local Bus Service Map						
Date: 6/27/2014		Drawn By: TransSystems		Figure No: 2-8		

Sources of Data: City of Hartford, CT Transit



Dash Service



dash Stop	Servicing
1	CT Science Center, Hartford Marriott, CT Convention Center, Front Street Attractions
2	Ancient Burying Ground, Wadsworth Atheneum, Hartford Public Library, Butler-McCook House
3	Welcome Center, Bushnell Park, Bushnell Park Carousel
4	Welcome Center, XL Center, Theater Works
5	Bushnell Park, Soldiers & Sailors Arch, State Capitol, Homewood Suites, Holiday Inn Express
6	Union Station (RR)
7	XL Center, Bushnell Park, Soldiers & Sailors Arch, State Capitol
8	XL Center, Hilton Hotel
9	Hartford Stage, Residence Inn, Old State House
10	Ramada Plaza Hotel
11	Old State House
12	Old State House, Riverfront Plaza

LEGEND

- Dash Service Route
- I-84
- I-84 Ramp
- Railroad
- I-84 Exit #
- Park
- Dash Stop
- Other Highway
- Project Corridor
- Union Station
- Park River Conduit
- U.S. Highway/State Road
- Town/City Limit
- CTfastrak Station
- Major Road
- Water
- CTfastrak

dash Free downtown shuttle departs CT Convention Center every 15 minutes Monday through Friday from 7:00am to 7:00pm. Extended hours during special large events—check www.cttransit.com for details.



Sources of Data: City of Hartford, CT Transit

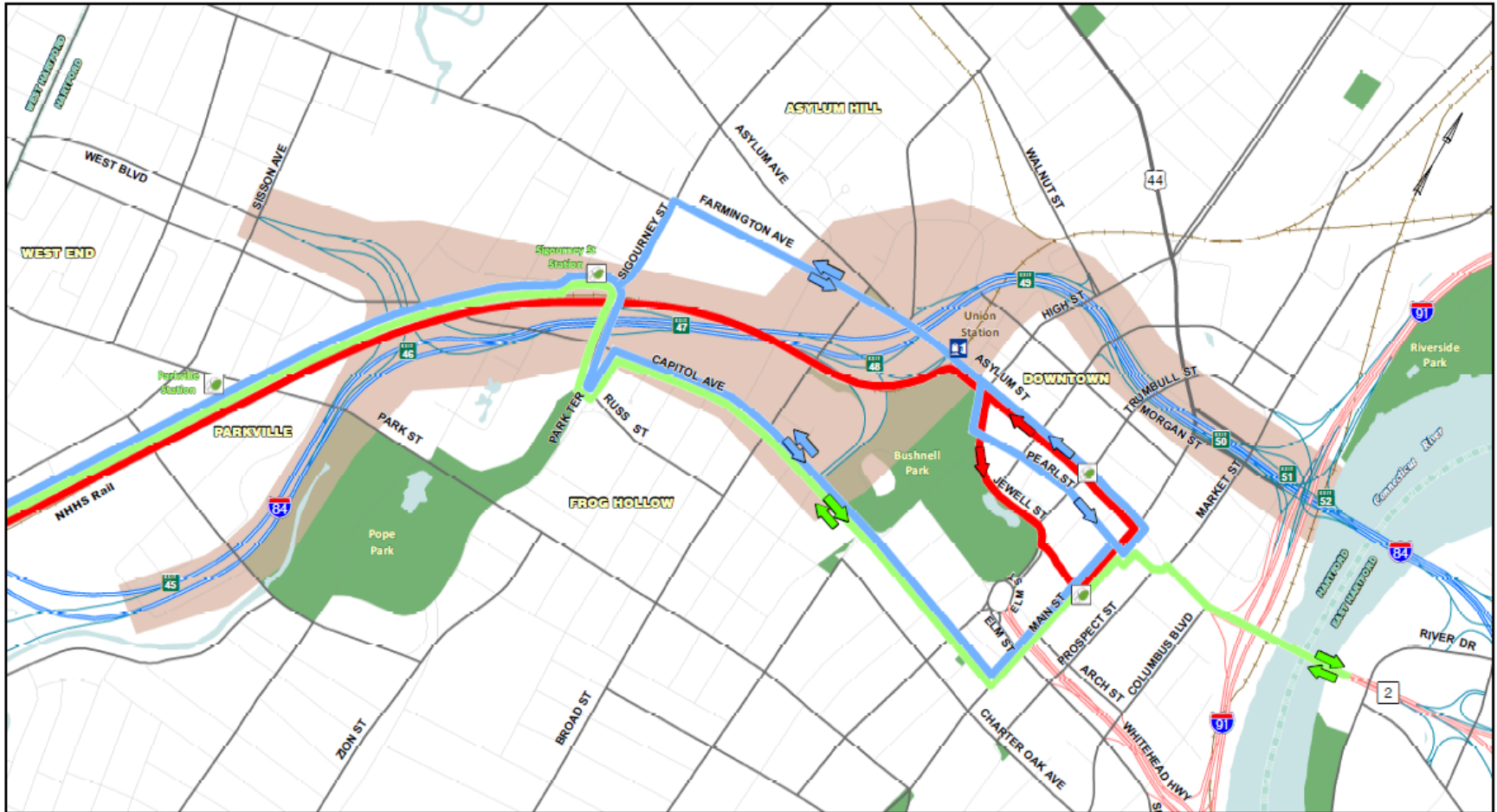
The I-84 Hartford Project

Dash Service Map

Date: 6/27/2014 Drawn By: TranSystems Figure No: 2-9



CTfastrak



LEGEND

- CTfastrak Station/Stop
- CTfastrak Express and Local
- CTfastrak Shuttle and Local
- Railroad
- Project Study Corridor
- Park
- Union Station
- I-84 Exit #
- Water
- Town/City Limit



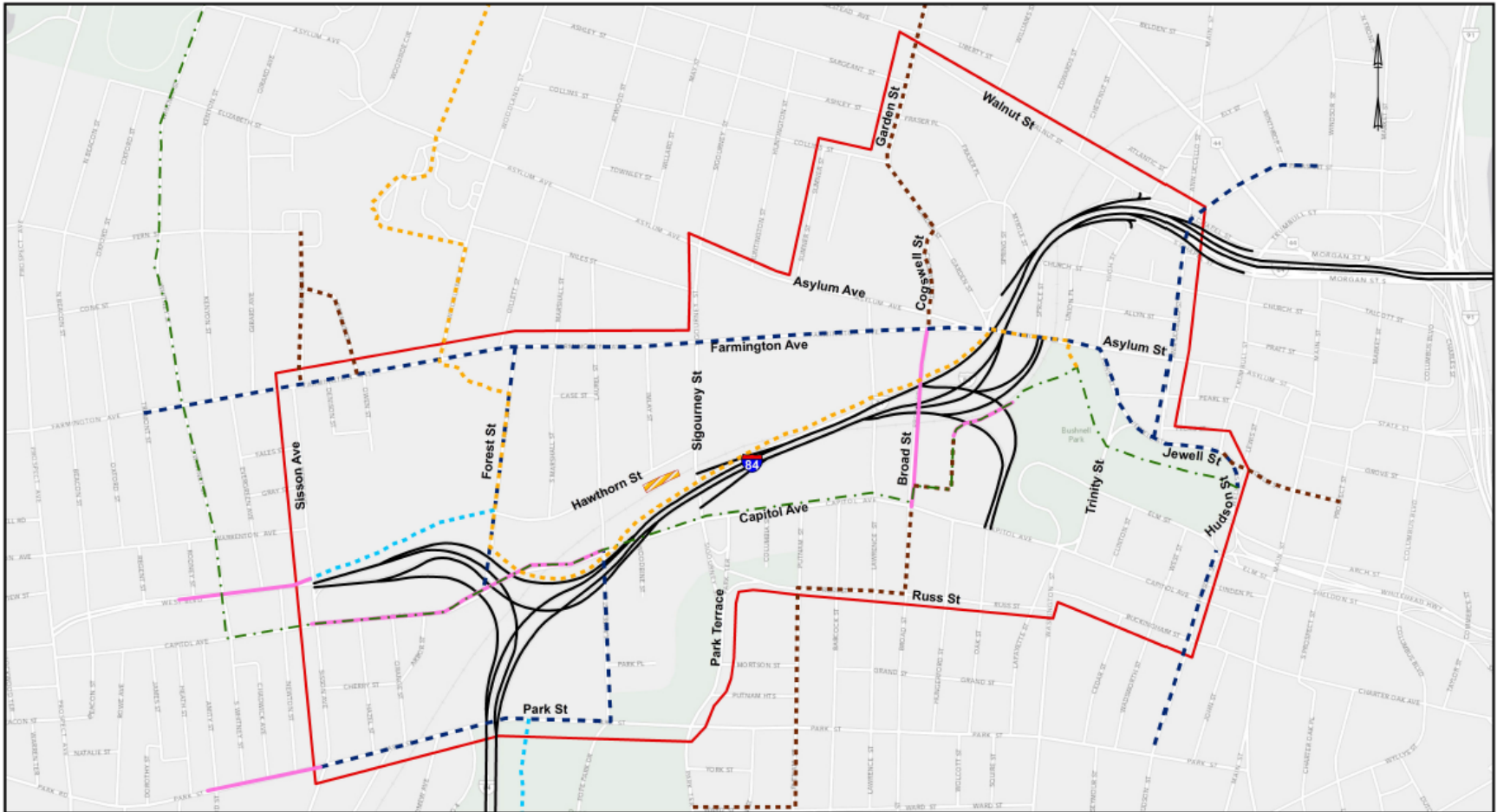
Sources of Data: City of Hartford, ESRI
<http://www.ctfastrak.com/>

The I-84 Hartford Project

CTfastrak Service Map



Bicycle Facilities



LEGEND	Existing East Coast Greenway	Proposed Sharrow	Proposed Bike Lane	Parking-Bicycle-Pedestrian Study Area
	Proposed East Coast Greenway	Sigourney CTFastrak Station		
	Existing Bike Lane		Proposed Multi Use Path	

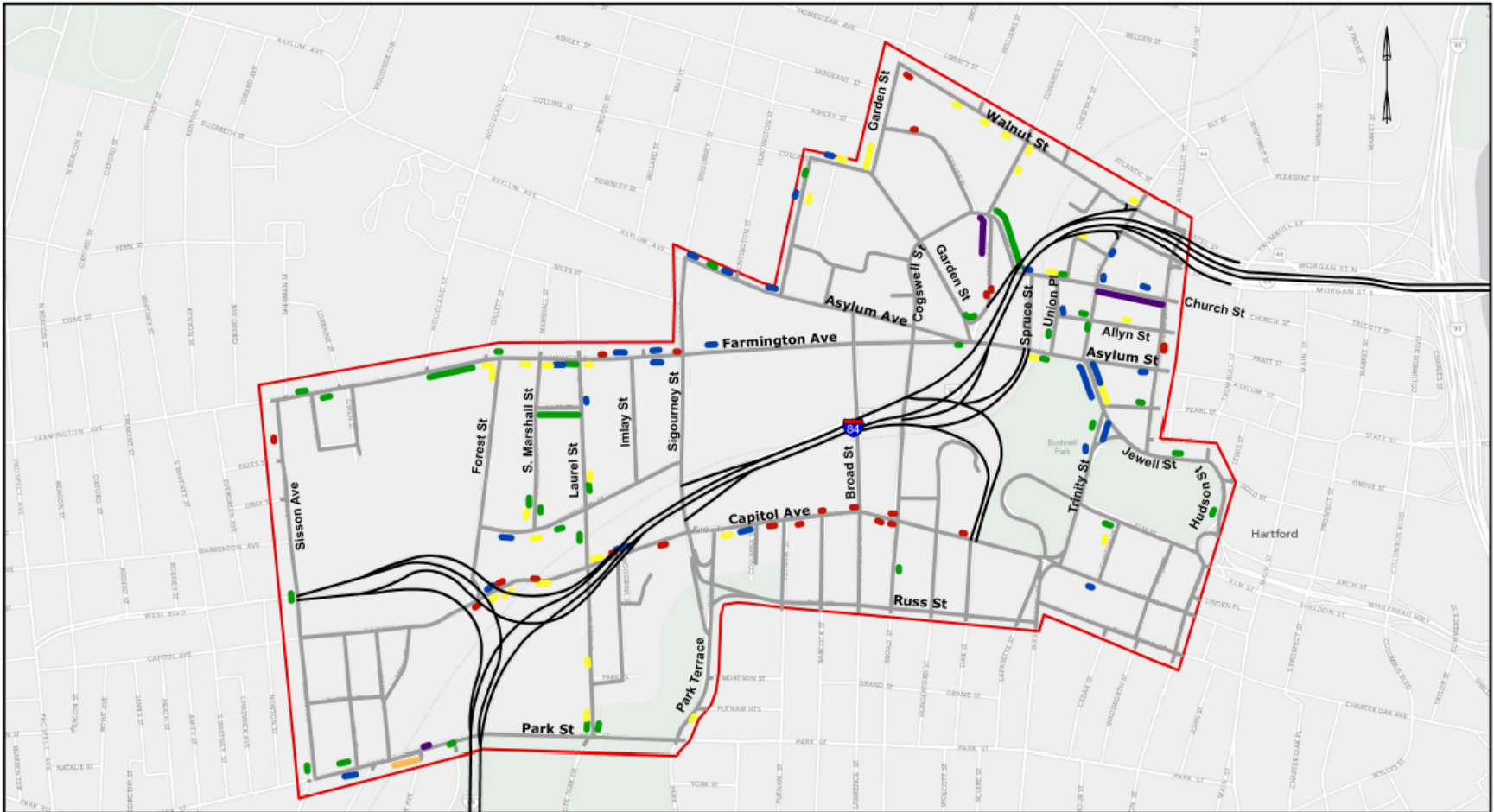
Sources of Data: ESRI, DeLorme, NAVTEQ

0 750 1,500 Feet

The I-84 Hartford Project	
Bicycle Facility Map	
Date: 4/29/2014	Drawn By: Parsons Brinckerhoff
Figure No: 2-11	



Sidewalk Deficiencies



LEGEND

- Sidewalk Deficiencies
 - Uneven
 - Large Cracks and Holes
 - Missing Section
 - Abrupt Edge
 - Non-Accessible
 - Obstruction
- I-84
- Roads
- Parking-Bicycle-Pedestrian Study Area

Sources of Data: ESRI, DeLorme, NAVTEQ

The I-84 Hartford Project

Sidewalk Deficiencies Map

Date: 5/7/2014	Drawn By: Parsons Brinckerhoff	Figure 2-12
----------------	-----------------------------------	-------------



Conceptual Planning Work Session

- Mark up a study area map with key bike/ped connections, discuss priority treatments
- Mark up priority transit routes and stops and explore enhancement options
- Identify potential intermodal connections and opportunities
- Identify issues and constraints.



Thank You!

We deeply appreciate your time and your commitment to helping us reach the best possible solution for the State, the region and the City.

Your I-84 Hartford Project Team